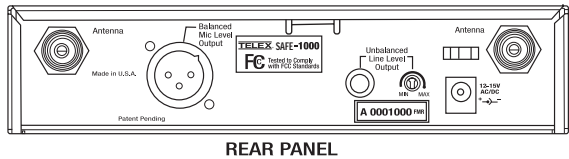
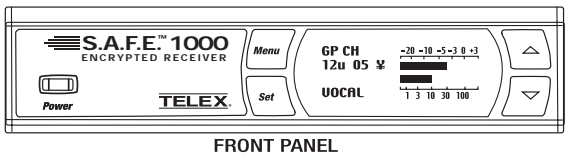


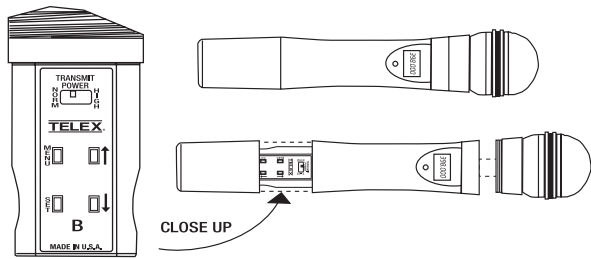
SPECIFICATIONS

SAFE-1000 Receiver



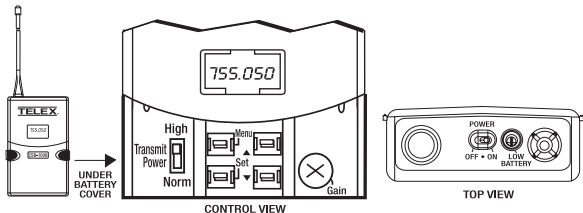
Controls	
Front Panel:	On/Off, menu, set, up, down buttons
Rear Panel:	1/4 inch output level
Indicators	
LCD Backlit Display:	Group, channel, diversity, label, squelch, set-up screen, audio signal amplitude, RF signal strength.
Connectors	
Back Panel:	1/4 inch unbalanced adjustable output XLR balanced output
Antennas:	Detachable 1/4 wave
RF Specifications	
Frequency Range:	A Band 680 – 704 MHz (TV Channels 49, 50, 51, 52) B Band 722 – 746 MHz (TV Channels 56, 57, 58, 59)
Number of Channels:	950 possible (programmable in 25kHz steps)
Diversity:	DSP PosiPhase true diversity
Receiver Type:	synthesized PLL agile UHF
Modulation Type:	NFSK
Squelch:	Digital plus Amplitude
FCC:	Approved under Part 15
Audio Specifications	
Frequency Response:	100 – 7000 Hz +/- 2 dB
Encryption:	32 Bit (16 imbedded, 16 user assigned)
Audio Output Level:	
Line Level	8 mV - 0.775V RMS into a 100 k ohm load
Balanced	-10 dBV max
Distortion:	Less than 1.0% (@1kHz)
Signal to Noise Ratio:	> 90 dB
Dynamic Range:	>90 dB
General Specifications	
Power Supply:	External 12 VAC 750mA in-line with cord
Size:	1.72" H x 7.50" W x 8.38" D 43.69mm H x 190.50mm W x 212.85mm D

SAFE-HT Handheld Transmitter



Controls	
Power on/off Audio gain adjustment with 26 dB range Transmit power switch Menu, set, up, down buttons	
Displays	
LCD display (channel and group, frequency, battery level), red LED battery low indicator	
Battery Life	7 hours with 9V alkaline (typical)
Antenna	Internal 1/2 wave
Microphone Elements	EV N/D 767a Dynamic or RE 510 Condenser (Available separately)
RF Output	
Normal	5 mW (typical)
High	50 mW (typical)
Size	10.5 in. long (26.8 cm)

SAFE-WT Bodypack Transmitter



Controls	
Power on/off switch Audio gain adjustment with 40 dB range Transmit power switch Menu, set, up, down buttons	
Indicators	
Red LED low battery indicator LCD display (channel/group, frequency, battery level)	
Battery Life	7 hours with 9V alkaline (typical)
Antenna	External 1/4 wave detachable
Connector	TA4M input for microphone Pin 1 ground, pin 2 mic input Pin 3 +5V bias, pin 4 +5V through 3k ohm
RF Output	
Normal	5 mW (typical)
High	50 mW (typical)
Case Material	Cast magnesium
Size	3.75 in. x 2.6 in. x .9 in. 96 mm x 66 mm x 23 mm

TELEX®

SAFE-1000 UHF

ENCRYPTED WIRELESS MICROPHONE SYSTEM



DIGITAL
ENCRYPTION

UHF
AGILE

950
CHANNELS

UP TO
16+
SIMULTANEOUS
SYSTEMS

TELEX®

TELEX COMMUNICATIONS

12000 Portland Avenue South, Burnsville, Minnesota 55337 U.S.A.
TEL: 800-392-3497 • FAX: 952-736-4582

pro.sound@telex.com www.electrovoice.com/telex-wireless

SPECIFICATIONS SUBJECT TO CHANGE WITHOUT NOTICE.
©2002 Telex Communications PA-20617 10/02

TELEX®

SAFE-1000 UHF

ENCRYPTED WIRELESS MICROPHONE SYSTEM

Who's listening
to your
conversation?

While the wonders of wireless technology brought
new freedom to communication, your conversations
were available to whoever wanted to listen.

Until now.



THE S.A.F.E.-1000 WIRELESS
MICROPHONE SYSTEM is
available with a beltpack
transmitter or a handheld
microphone. The rugged cast
magnesium beltpack
transmitter is a compact
design that meets the needs
of most any wireless user.
The handheld microphone is
fully featured and includes
a unique warmgrip™ handle.

So when the application calls
for security, S.A.F.E.-1000 is
the solution.

SECURE AUDIO FREQUENCY ENCRYPTION

NOW TELEX, CREATORS OF THE FIRST SECURE WIRELESS MICROPHONE,
OFFERS FREEDOM AND SECURITY with the new S.A.F.E.-1000™ second
generation encrypted wireless microphone system. The S.A.F.E.-1000 (Secure
Audio Frequency Encryption) system brings airtight security to wireless
transmissions of confidential information. Each and every matched S.A.F.E.-
1000 system comes with its own unique security code. Not even another
S.A.F.E.-1000 receiver can intercept your transmission.

THE S.A.F.E.-1000 OFFERS POWERFUL FEATURES like Advanced
ClearScan™ automatic channel selections, 950 possible channels, and factory
preset groups and channels that allow up to 16 simultaneous systems in
one band. These tools make setting up a Fortune® 500 boardroom with
10 systems quick and easy.

WHEN CONFIDENTIALITY IS PRIORITY ONE, THE S.A.F.E. SYSTEM
REPRESENTS A BREAKTHROUGH IN SECURITY FOR WIRELESS
MICROPHONES. Based on technology adapted from Telex's intercom used by
the National Football League, the S.A.F.E.-1000 system is ideal for the
transmission of restricted or classified information over a wireless system.
A scanner cannot intercept encrypted conversation when you're on a S.A.F.E.-
1000 system, unlike other brands of wireless microphones.

SYSTEM CONFIGURATIONS AND COMPONENTS

SAFE-1000L

ENCRYPTED BODYPACK SYSTEM
INCLUDES:

- SAFE-1000 950 channel UHF receiver
- SAFE-WT bodypack transmitter
- ELM-22 micromini omni lav mic
- Rack mount hardware for single/dual mount
- 2 1/4 wave antennas
- In-line power supply

SAFE-1000WT

BODYPACK SYSTEM SAME AS ABOVE
WITH NO MIC

SAFE-1000HD

ENCRYPTED HANDHELD SYSTEM
INCLUDES:

- SAFE-1000 950 channel UHF receiver
- SAFE-HD EV 767a NDYM handheld transmitter
- Rack mount hardware for single/dual mount
- 2 1/4 wave antennas
- In-line power supply

SAFE-1000H/L

ENCRYPTED COMBO SYSTEM INCLUDES:

- SAFE-1000 950 channel UHF receiver
- SAFE-HD EV 767a NDYM handheld transmitter
- SAFE-WT bodypack transmitter
- ELM-22S Omni Lapel microphone
- Rack mount hardware for single/dual mount
- 2 1/4 wave antennas
- In-line power supply

SAFE-WT

UHF ENCRYPTED WIRELESS BODYPACK
TRANSMITTER

- 950 selectable channels
- On/off switch
- Metal housing
- Tx power switch
- Battery low led indicator
- TA-4M mic connector
- Operates on a single 9V battery

SAFE-HD

UHF ENCRYPTED WIRELESS HANDHELD
TRANSMITTER

- 950 selectable channels
- On/off switch
- Tx power switch
- Battery low led indicator
- EV N/D767a dynamic mic element
- Operates on a single 9V battery

SECURITY
SOLUTION

Accessories & Parts

DESCRIPTION	MODEL #	ORDER #
Omnidirectional MicroMini™ Lapel Mic:	ELM-22S	70925001
Unidirectional MicroMini™ Lapel Mic:	ELM-33S	70926001
Headworn Cardiod Condenser Mic:	HM7	HM7
1/4 Wave Rx Antenna 600-746 (A/B):	ANU-14	879010
1/2 Wave Rx Antenna (A/B) (680-860 MHz):	FA-1	860031
1/2 Wave Antenna Bracket:	AB-2	71138000
Antenna/Power Distribution (A/B) (600-780 MHz):	UAD-2	71253000
Termination Plug for UAD-2:	TP-2	650095
Directional Rx Antenna (450-900 MHz):	ALP-450	71147000
Low Loss Coaxial Antenna Cable:	CXU-25 ft	71151025
	CXU-50 ft	71151050
	CXU-75 ft	71151075
	CXU-100 ft	71151100
1/4 Wave Bodypack Tx Antenna (A):	AN-Flex A (GREEN)	879220-4
1/4 Wave Bodypack Tx Antenna (B):	AN-Flex B (RED)	879220-5
1/4 Wave Super-Flex Tx Antenna (A):	AN-Sflex A (GREEN)	879538-4
1/4 Wave Super-Flex Tx Antenna (B):	AN-Sflex B (RED)	879538-5
Bodypack Pouch:	WP-1000	879553
767a Dynamic Head for SAFE-HT:	RC767A	71837000
RE510 Condenser Head for SAFE-HT:	RC510	71839000
Mic Stand Adapter for SAFE-HT:	MSA-1000	879564