

## Related Product:

C-Soft and ADHB-4

## Question:

I want to be able to hear select audio in my headset and also on my speakers. How can I do this?

## Solution:

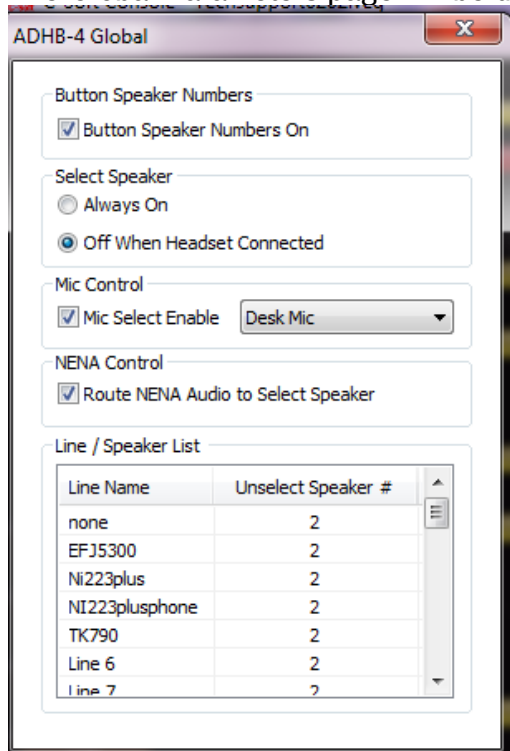
Note: This solution is only applicable when using a Telex ADHB-4 and C-Soft version 6.200 or higher.

There are 2 possible ways to have select audio heard in the speakers; the first one shown is using the ADHB-4 Global Parameters page. Following the next 3 steps will have select audio always present on the speakers.

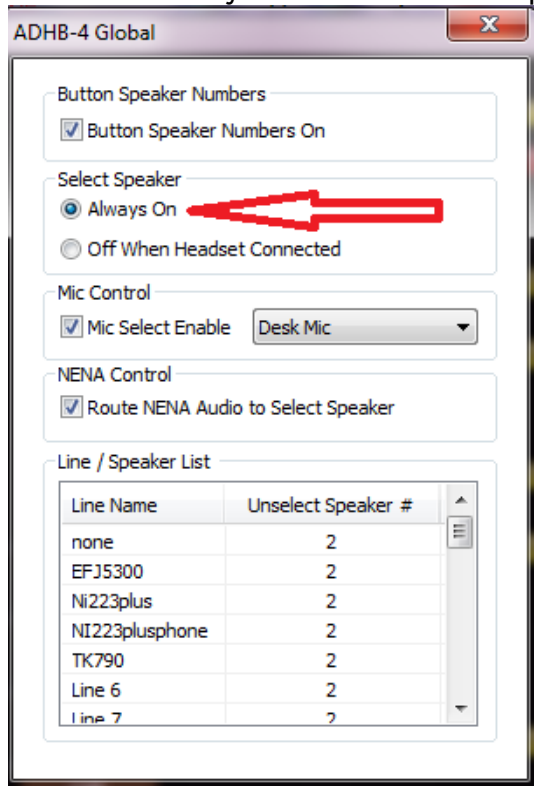
From the C-Soft Runtime screen, right click on the message bar



The Global Parameters page will be displayed



Select the “Always On” for the Select Speaker as shown by the red arrow.

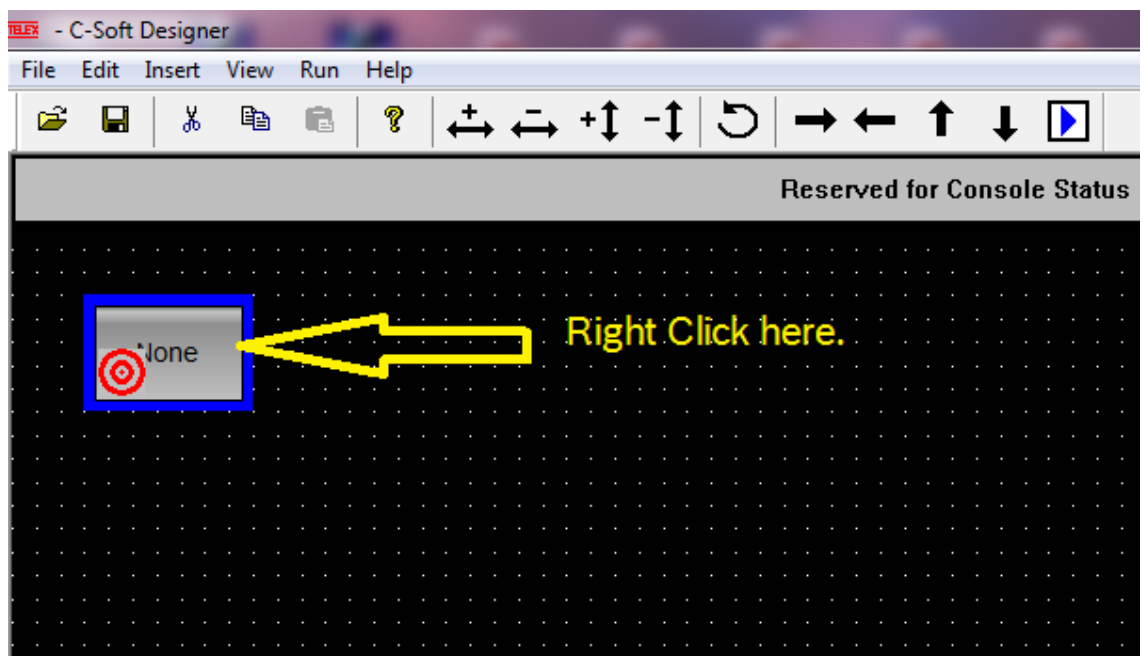
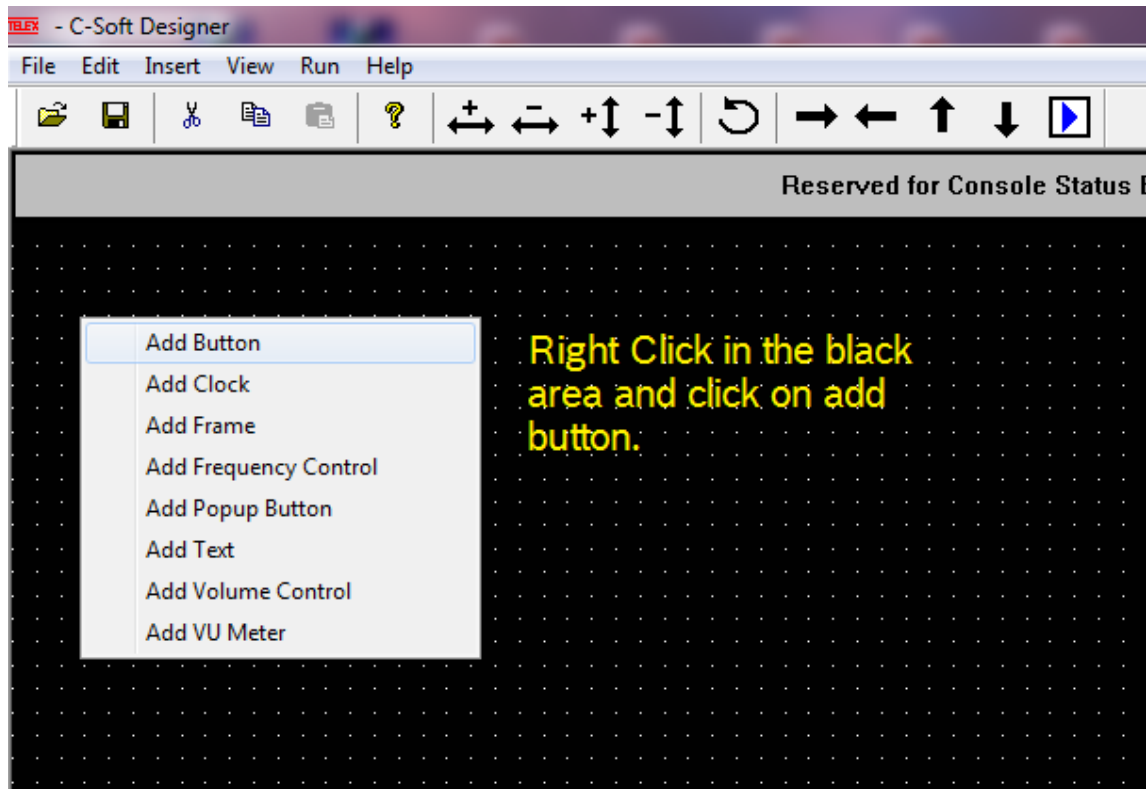


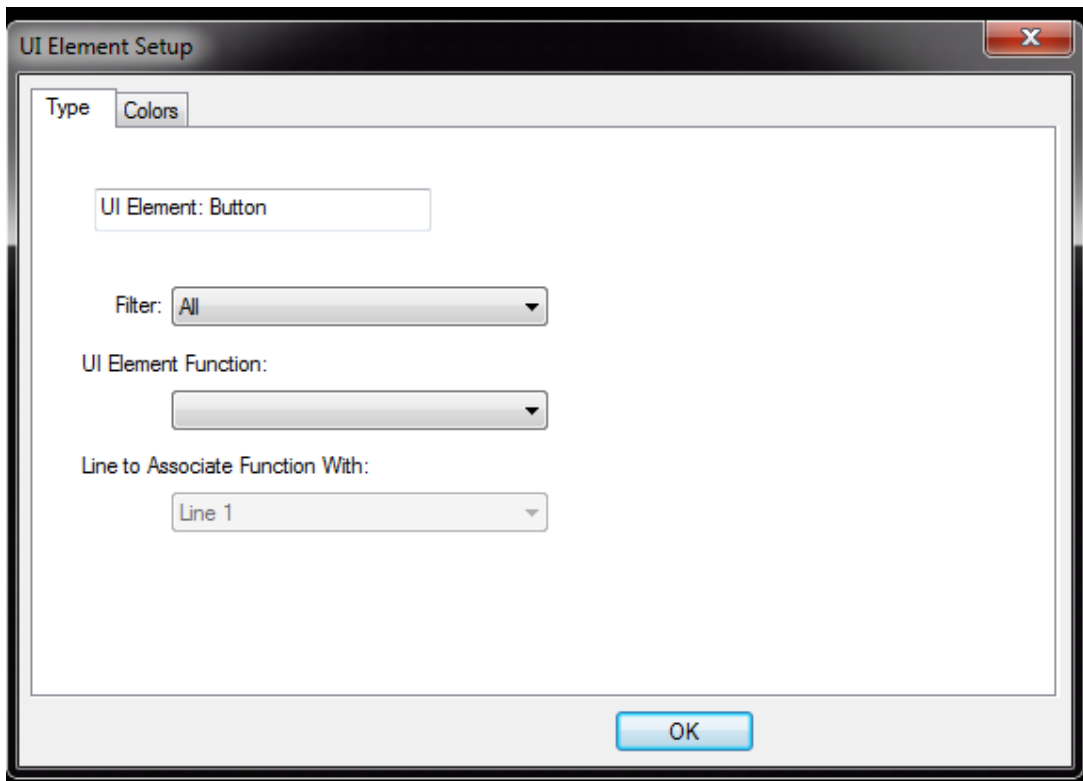
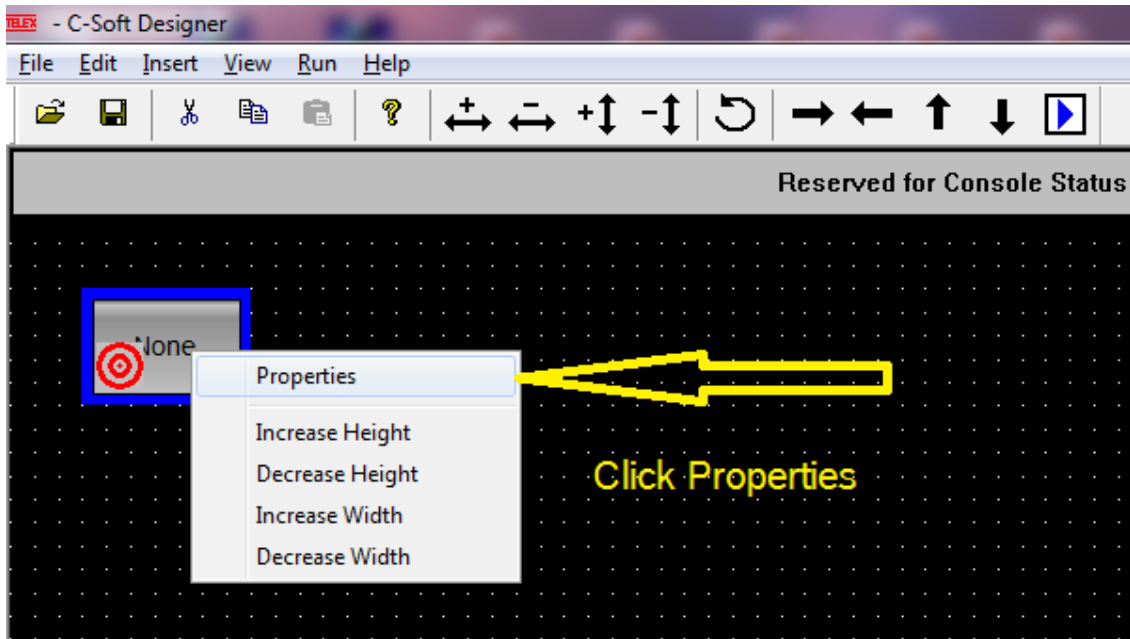
Now close the window.

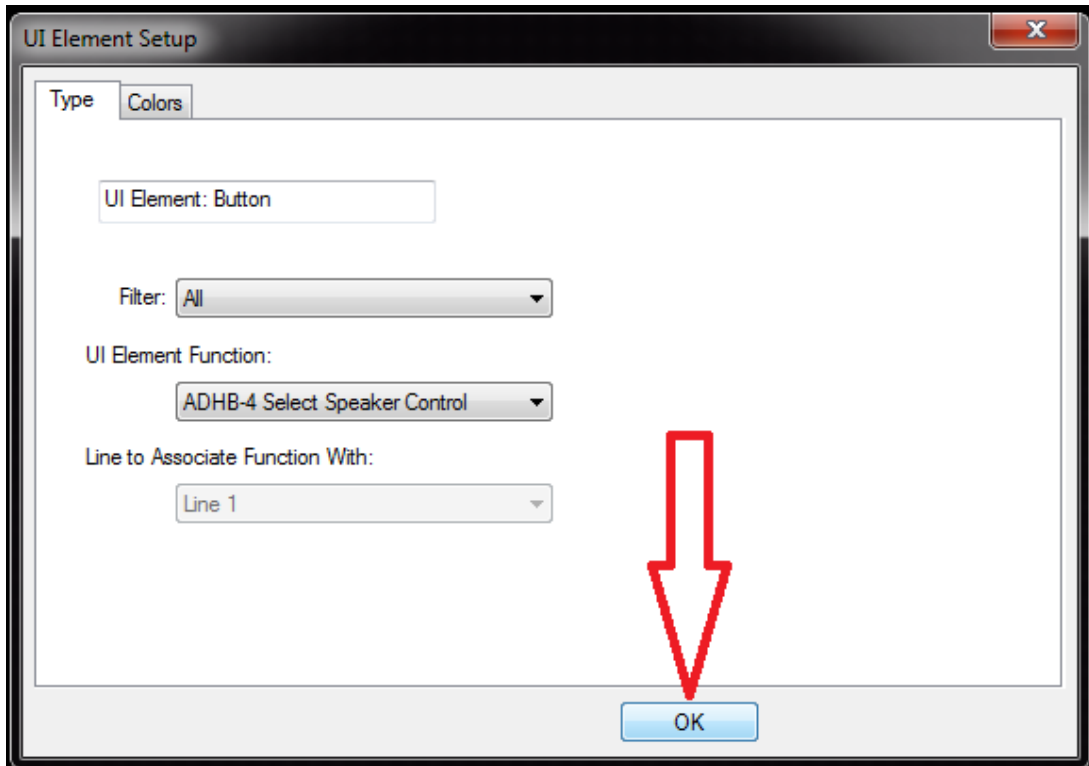
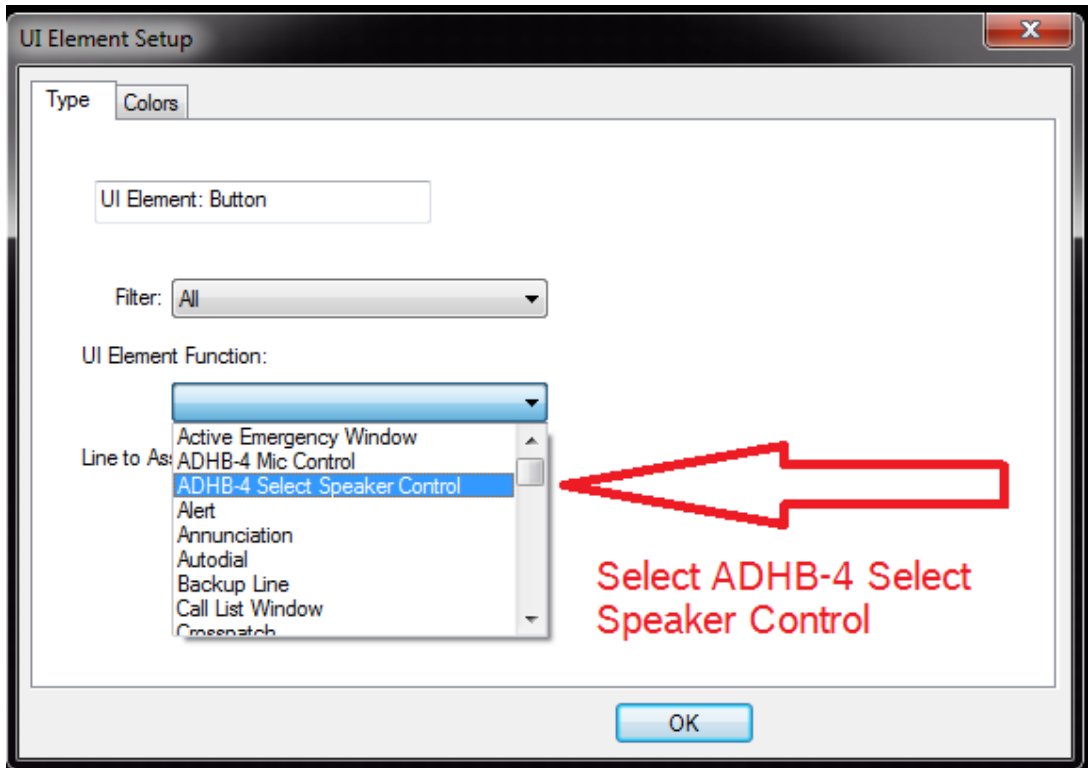
You should now have select audio always present at the speaker and the headset earpiece.

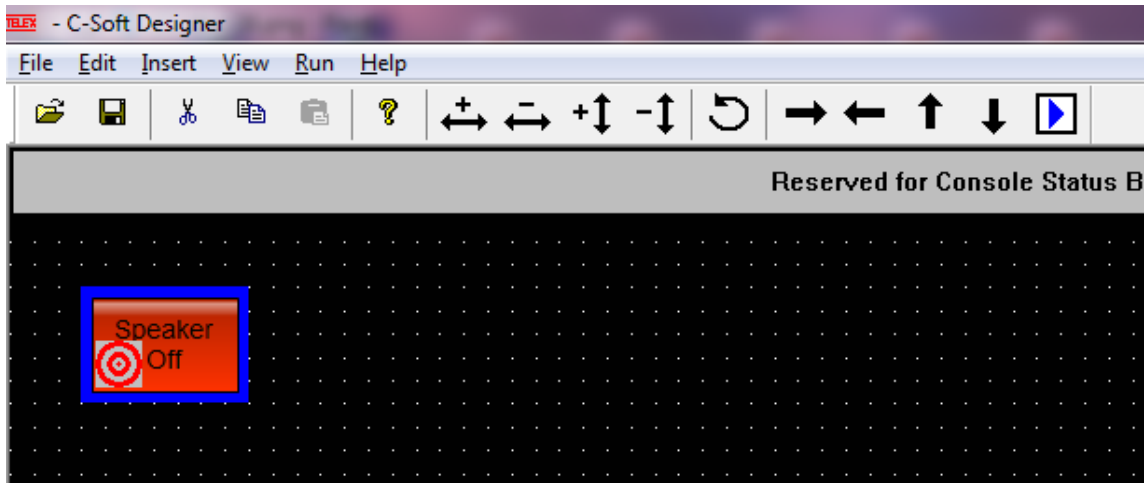
The second solution requires that a button be added to the design, this would allow a single press to switch the above function ON or OFF.

The following steps will walk you through on adding a Select Speaker Control button.









This button will allow you to have select audio in the speaker at will.

**Suggestions or comments:**

Contact technical support with suggestions or comments concerning this application note.

**Technical Support:**

**Email:** [Telexdispatchtechsupport@us.bosch.com](mailto:Telexdispatchtechsupport@us.bosch.com)

**Fax:** 1-402-467-3279

**Phone:** 1-800-898-6723

Bosch Security  
Systems, Inc.  
8601 East Cornhusker  
Highway  
Lincoln Nebraska  
68507

**Phone: (800) 752-7560 Fax: (402) 467-3279**

**Email:**

[Telexdispatch@us.bosch.com](mailto:Telexdispatch@us.bosch.com)

**Web:**

[www.telex.com](http://www.telex.com)