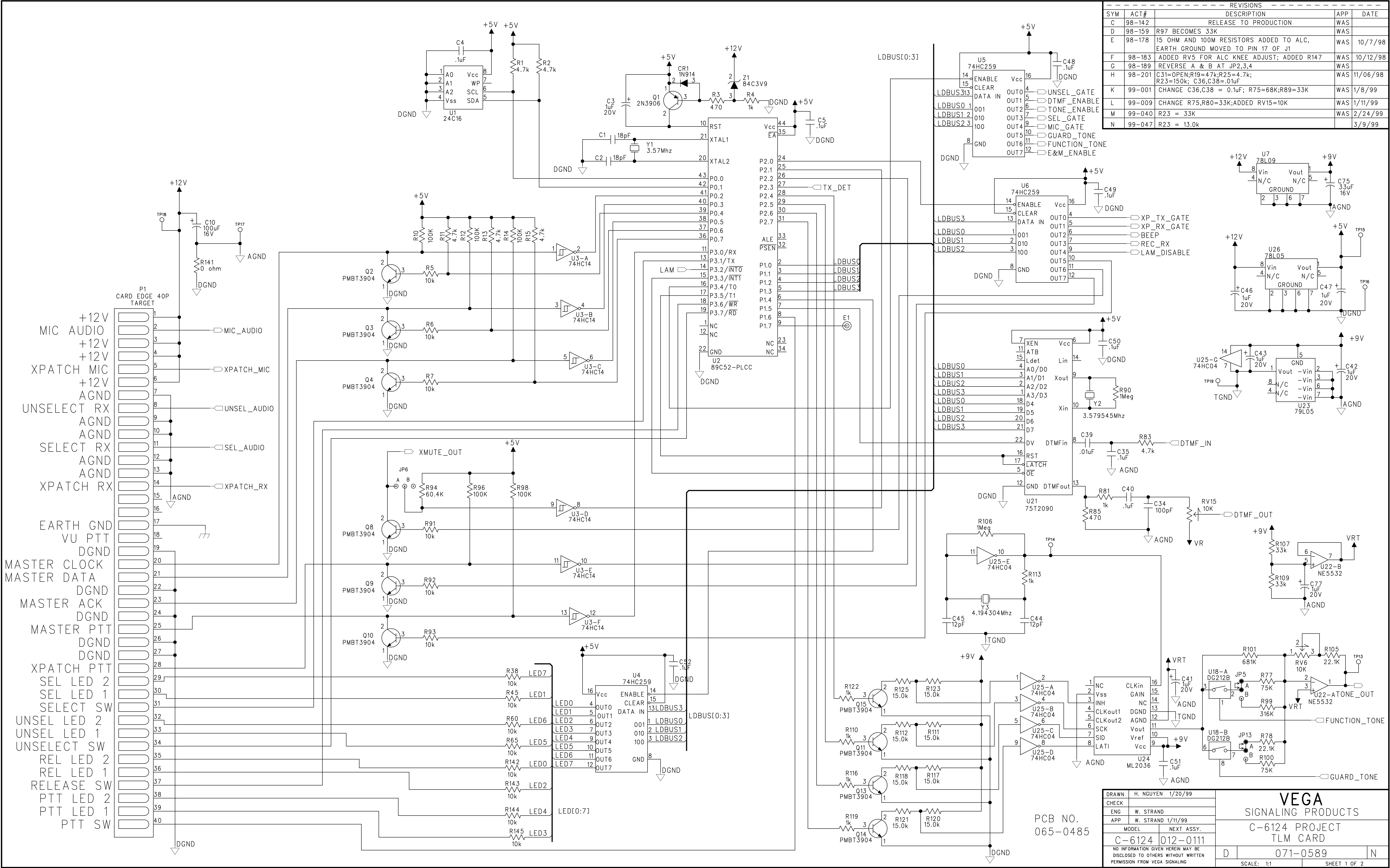
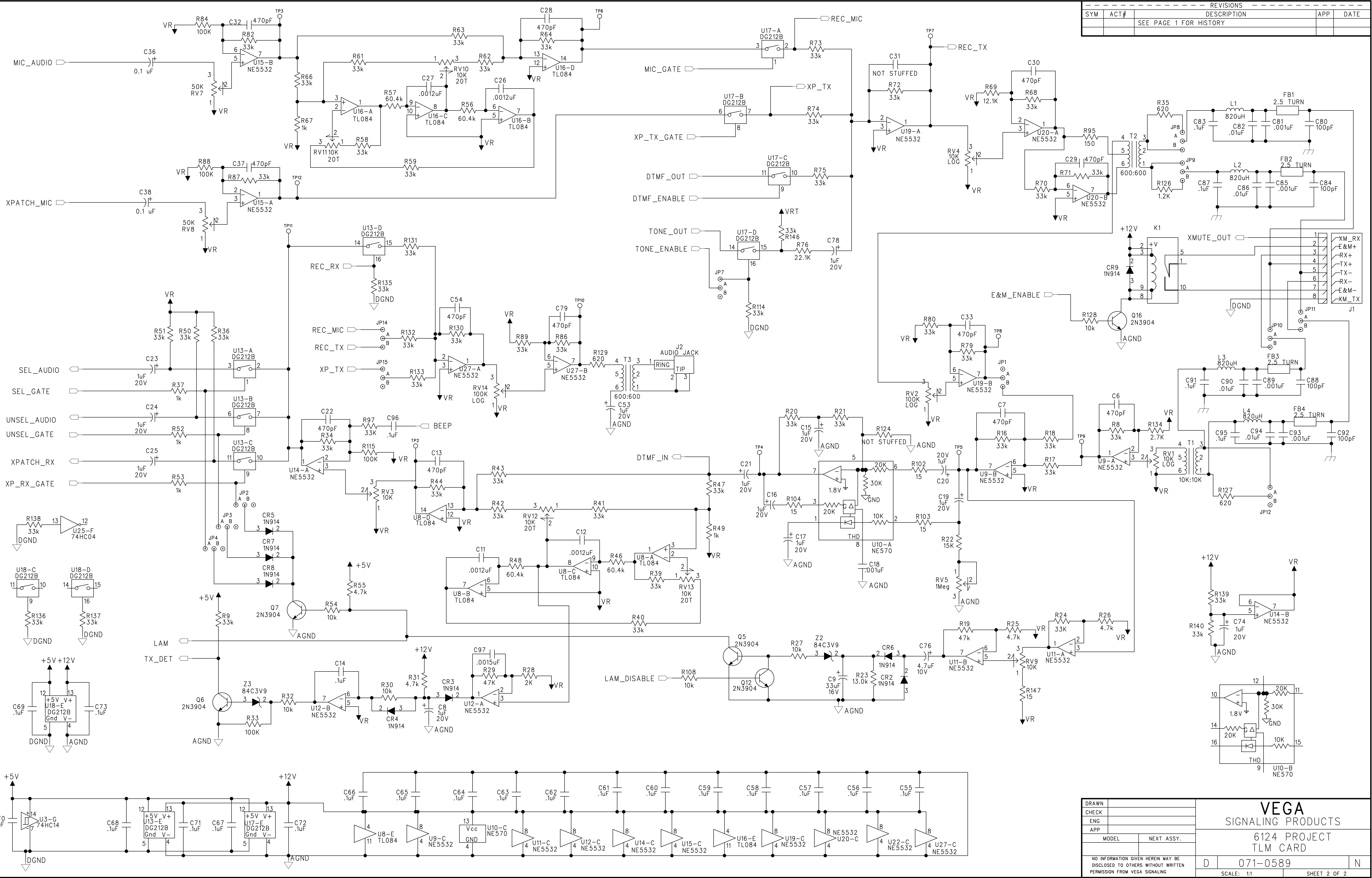


REVISIONS				
SYM	ACT#	DESCRIPTION	APP	DATE
C	98-142	RELEASE TO PRODUCTION	WAS	
D	98-159	R97 BECOMES 33K	WAS	
E	98-178	15 OHM AND 100M RESISTORS ADDED TO ALC, EARTH GROUND MOVED TO PIN 17 OF J1	WAS	10/7/98
F	98-183	ADDED RV5 FOR ALC KNEE ADJUST; ADDED R147	WAS	10/12/98
G	98-189	REVERSE A & B AT JP2,3,4	WAS	
H	98-201	C31=OPEN;R19=47k;R25=4.7k; R23=150k; C36,C38=.01uF	WAS	11/06/98
K	99-001	CHANGE C36,C38 = 0.1uF; R75=68k;R89=33K	WAS	1/8/99
L	99-009	CHANGE R75,R80=33k;ADDED RV15=10K	WAS	1/11/99
M	99-040	R23 = 33K	WAS	2/24/99
N	99-047	R23 = 13.0k		3/9/99



DRAWN	H. NGUYEN 1/20/99		VEGA SIGNALING PRODUCTS	
CHECK				
ENG	W. STRAND			
APP	W. STRAND 1/11/99			
	MODEL	NEXT ASSY.	C-6124 PROJECT TLM CARD	
C-6124 012-0111				
NO INFORMATION GIVEN HEREIN MAY BE DISCLOSED TO OTHERS WITHOUT WRITTEN PERMISSION FROM VEGA SIGNALING				
D	071-0589		N	
SCALE: 1:1		SHEET 1 OF 2		

REVISIONS				
SYM	ACT#	DESCRIPTION	APP	DATE
		SEE PAGE 1 FOR HISTORY		



DRAWN		<b>VEGA</b> SIGNALING PRODUCTS 6124 PROJECT TLM CARD	
CHECK			
ENG			
APP			
MODEL	NEXT ASSY.	D 071-0589	
NO INFORMATION GIVEN HEREIN MAY BE DISCLOSED TO OTHERS WITHOUT WRITTEN PERMISSION FROM VEGA SIGNALING		SCALE: 1:1	
		SHEET 2 OF 2	